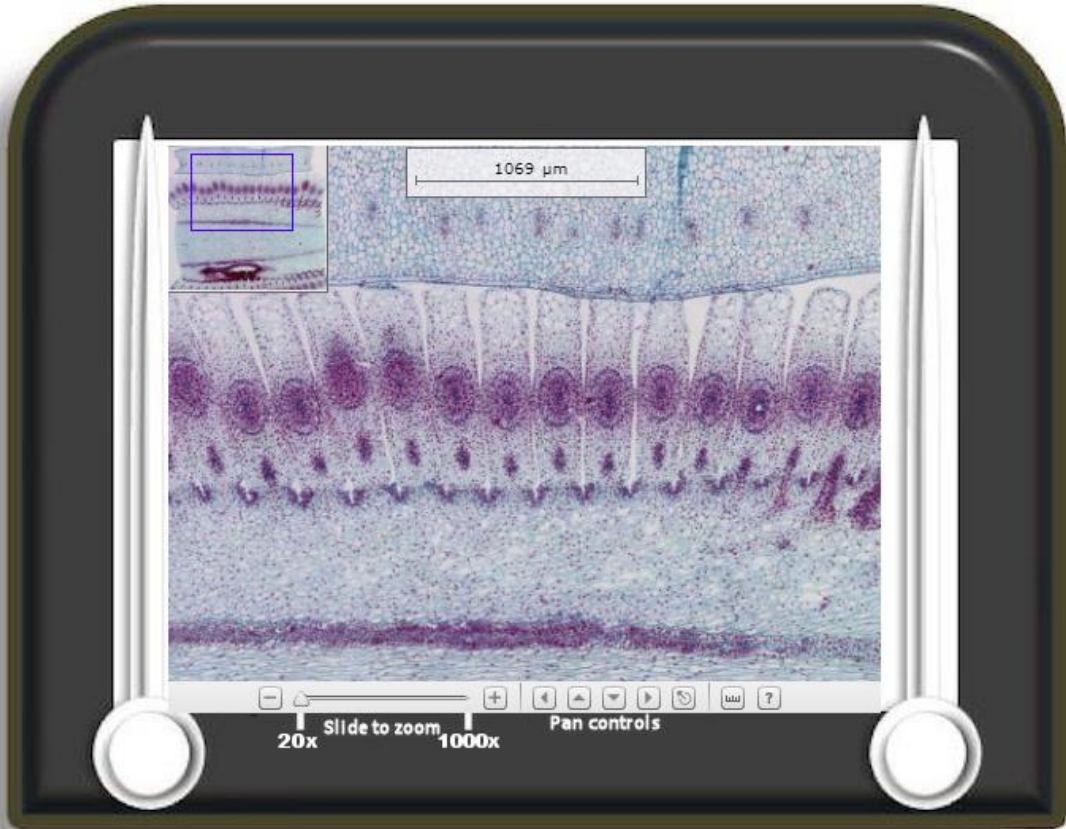


# e-SCOPE 2.0

Close the e-Scope and choose another area or slide



# Optical Society

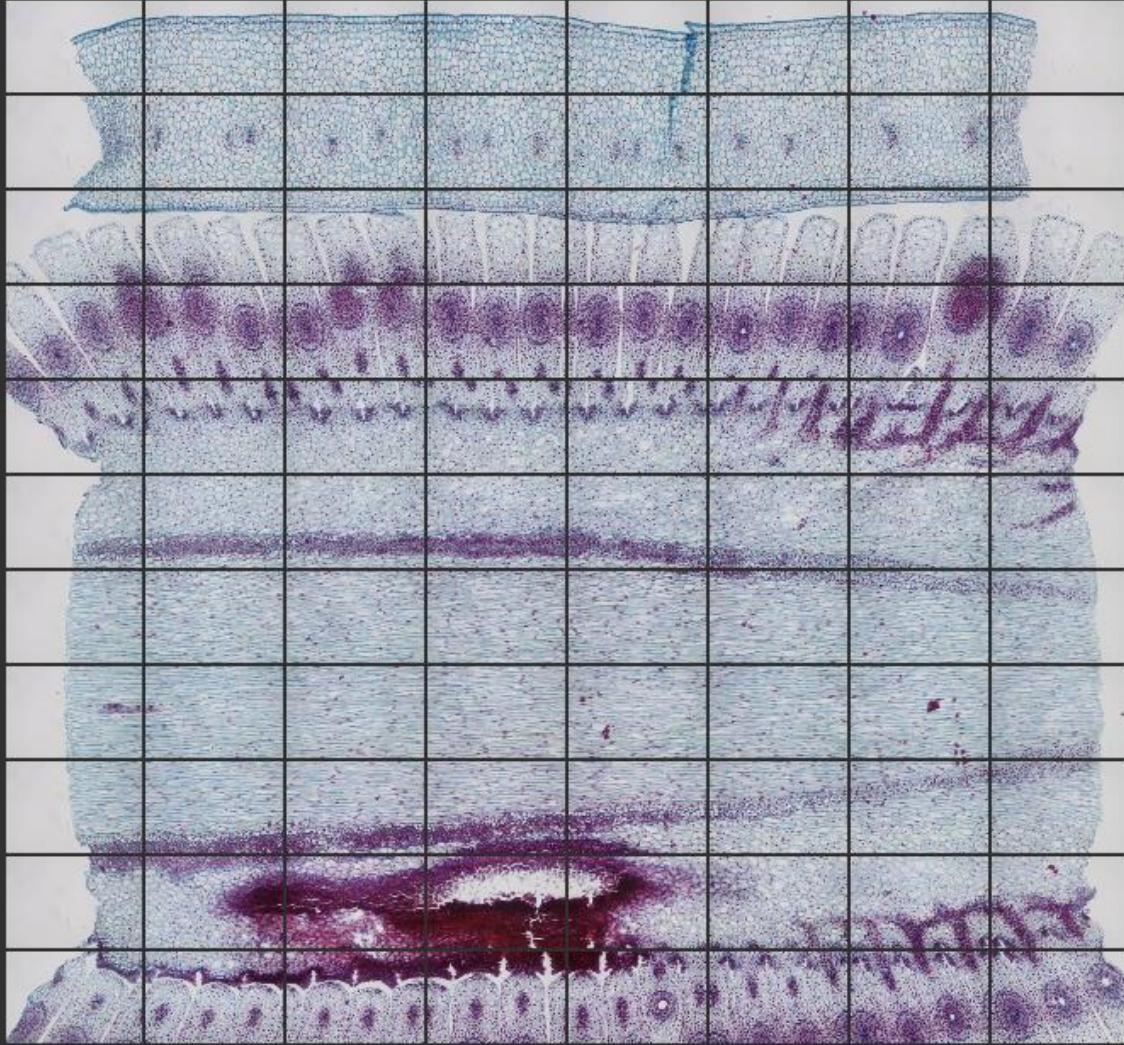
Founded 1991



Add images... Remove selected

Sort by File name

Drag & drop photos here



> Simple panorama

> Structured panorama

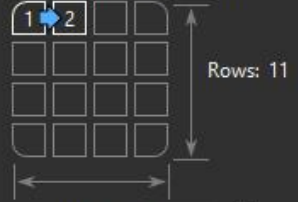
Camera motion

Planar motion

Layout

Auto layout 88 images

Initial corner and direction



Columns: 8

Image order  
 Serpentine  
 Zigzag

Angular range  
 Less than 360°  
 360° horizontally  
 360° vertically

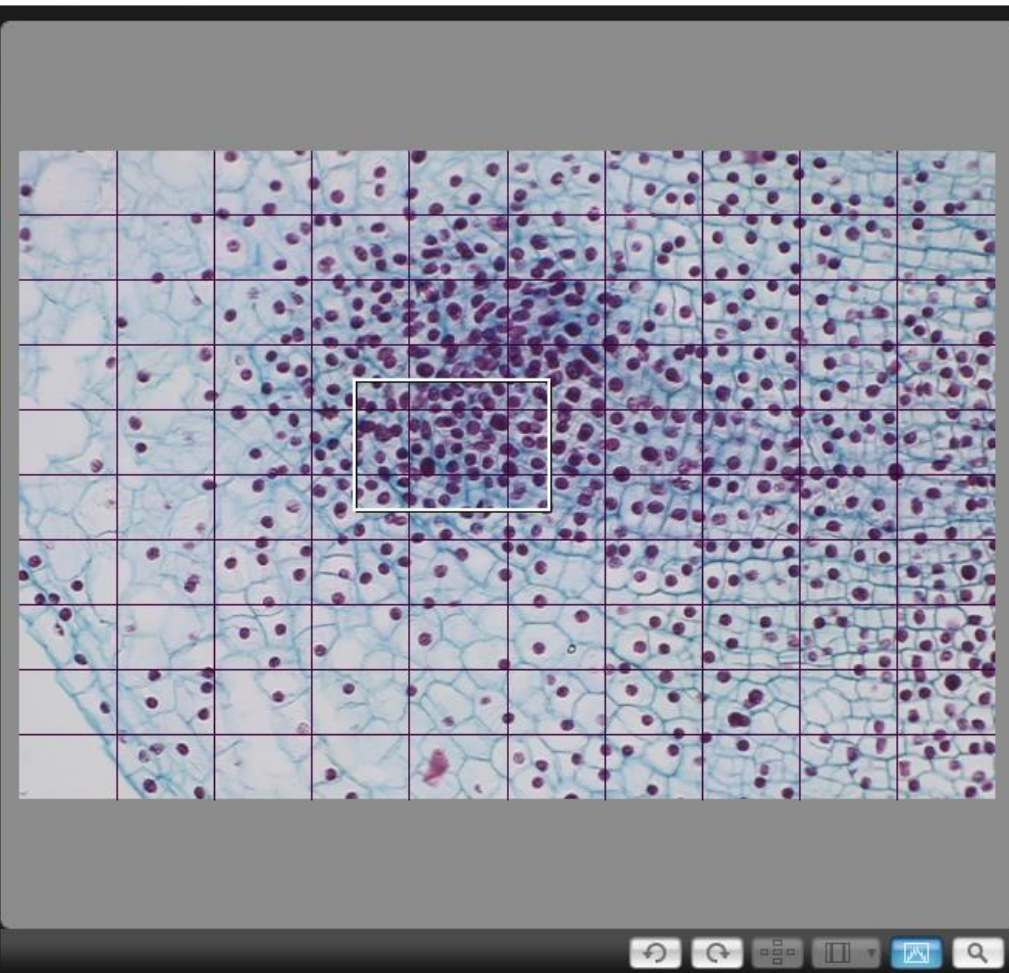
Overlap

Auto overlap

Horizontal 15 %  
Vertical 20 %  
360° seam 80 %  
Search radius 26 %

Preview overlap

Remote Live View window



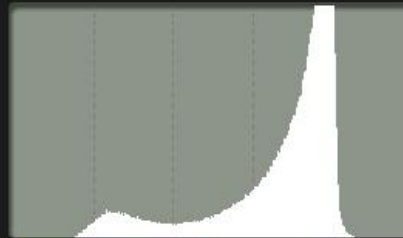
Live View Compose

WhiteBalance  
Custom  
K  
Apply to shot images  
Test shooting

Focus  
Live mode  
ON OFF  
Navigation arrows

Depth-of-field preview  
ON OFF

Exp.SIM



Bright RGB

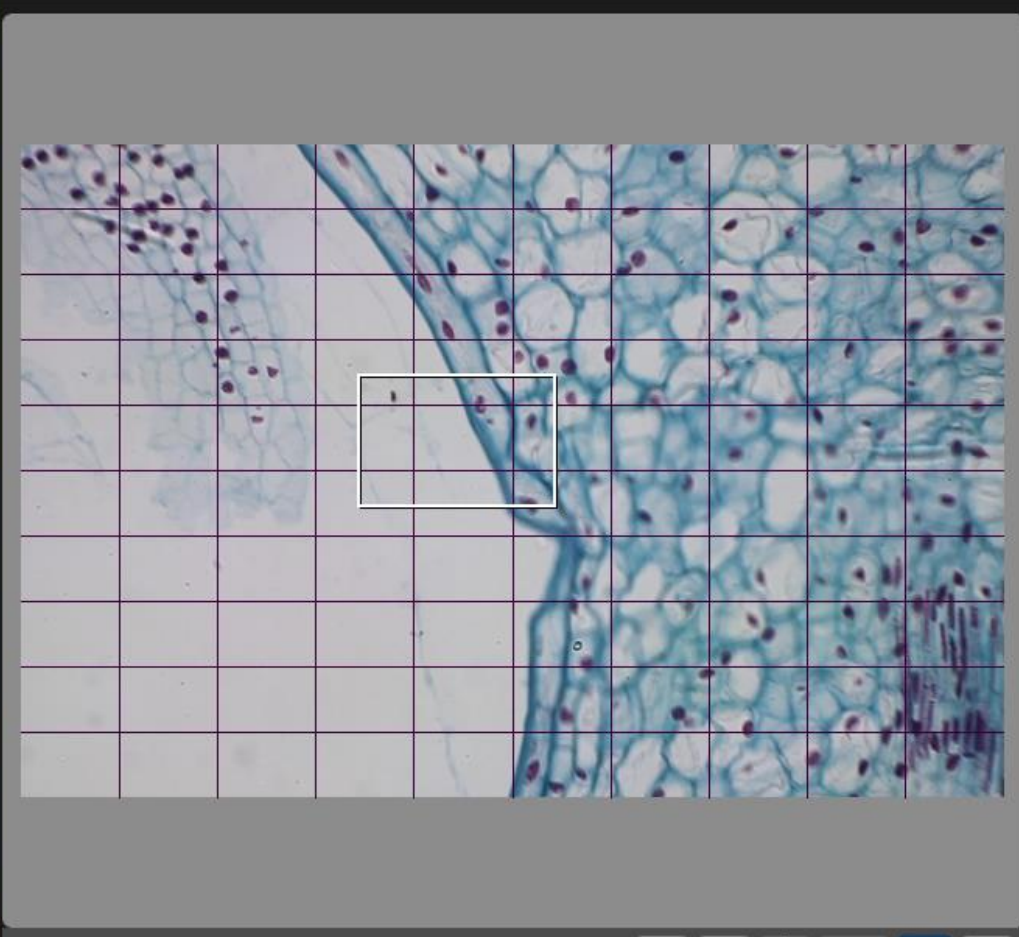
Close

EOS 500D

EOS 500D camera interface showing various settings and menus.

9999  
Pictures  
Tv 1/100 F0 0  
ISO 100  
M  
Shooting menu  
Picture Style User Def. 1  
Detail set. 4, 1, -4, 0  
Register User Defined style  
WB SHIFT 0,0  
Peripheral illumin. correct.  
Live View shoot...  
Other Functions...  
Preferences... Main Window

Remote Live View window



Live View Compose

WhiteBalance

Custom

K

Apply to shot images

Test shooting

Focus

Live mode

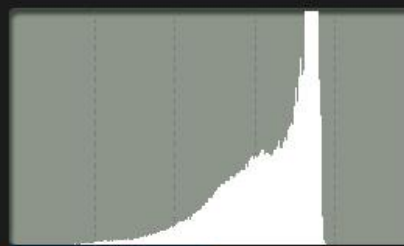
ON OFF

<<< << < > >> >>> ∞

Depth-of-field preview

ON OFF

Exp.SIM



Bright. RGB

Close

EOS 500D

9999

Pictures

TV 1/100 F0 0

ISO 100

M

! . . -1 . . 0 . . +1 . . +2 .

Shooting menu

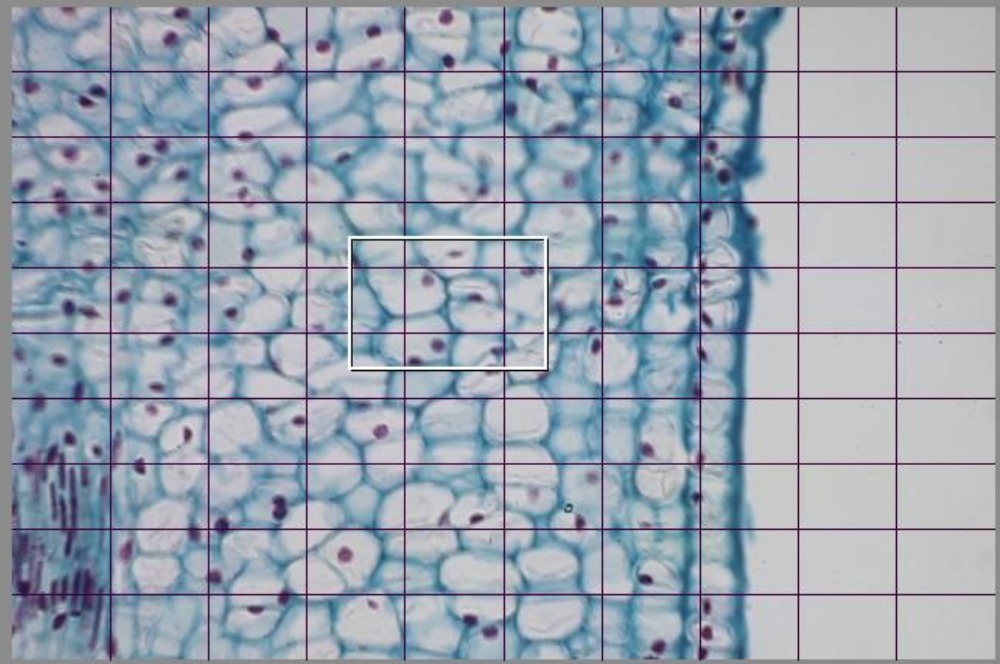
Picture Style	User Def. 1
Detail set.	4 , 1 , -4 , 0
Register User Defined style	
WB SHIFT	0,0
Peripheral illumin. correct.	

Live View shoot ...

Other Functions...

Preferences... Main Window

Remote Live View window



Live View Compose

WhiteBalance

Custom

K

Apply to shot images

Test shooting

Focus

Live mode

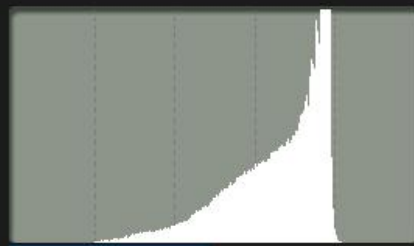
ON OFF

<<< << < > >> >>> ∞

Depth-of-field preview

ON OFF

Exp.SIM



Bright. RGB

Close

EOS 500D

9999

Pictures

Tv 1/100 F0 0

ISO 100

M

Shooting menu

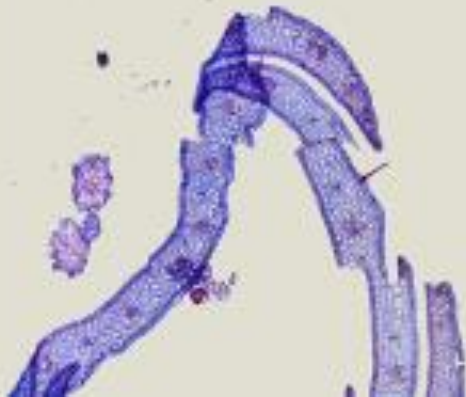
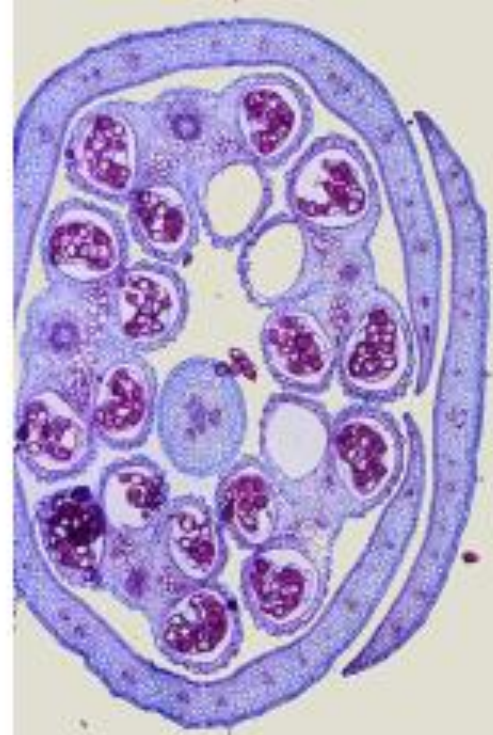
Picture Style	User Def. 1
Detail set.	4, 1, -4, 0
Register User Defined style	
WB SHIFT	0,0
Peripheral illumin. correct.	

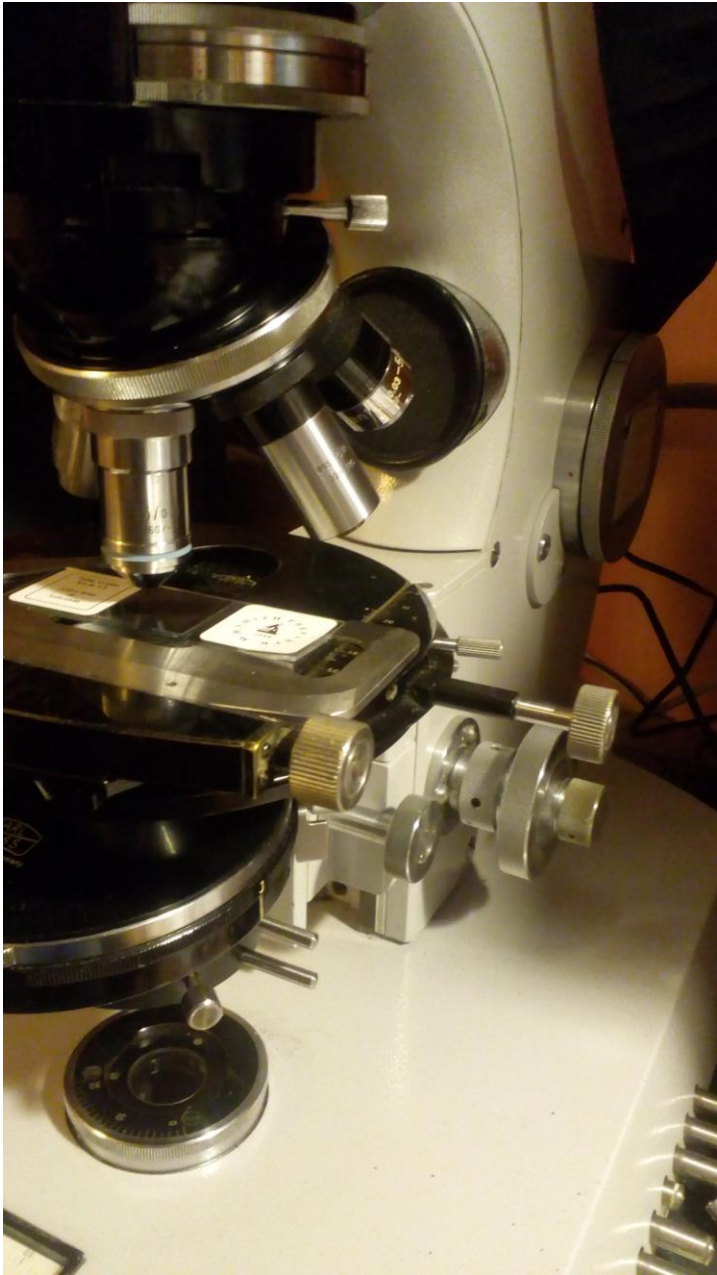
Live View shoot ...

Other Functions...

Preferences... Main Window

net





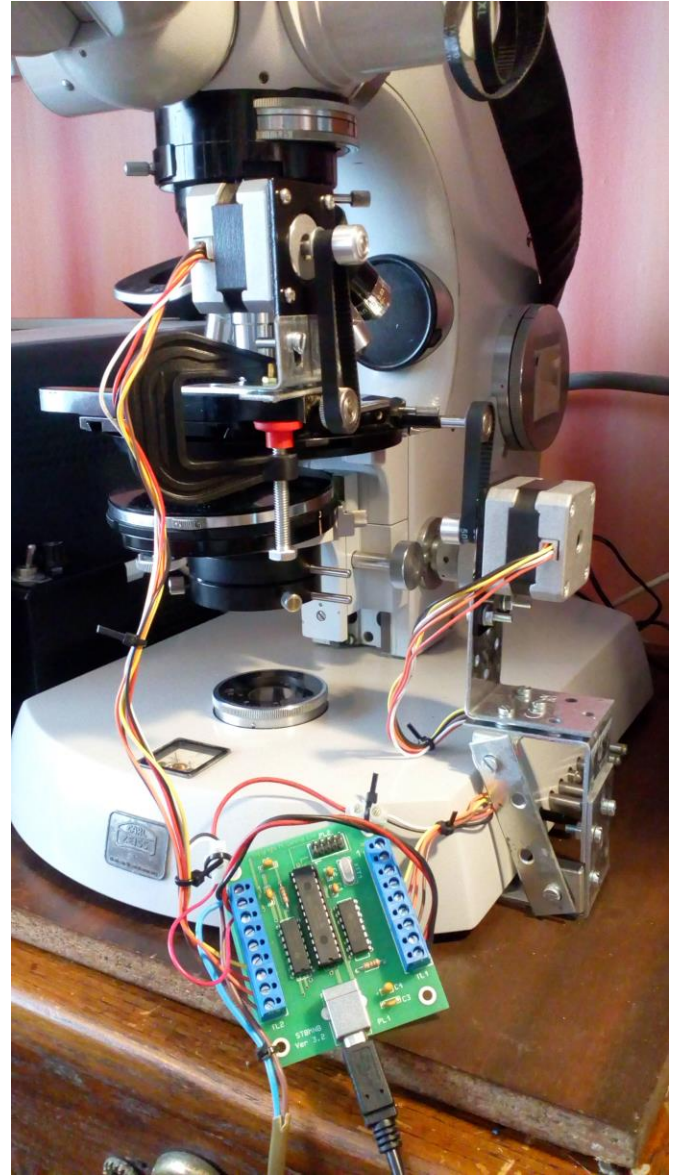
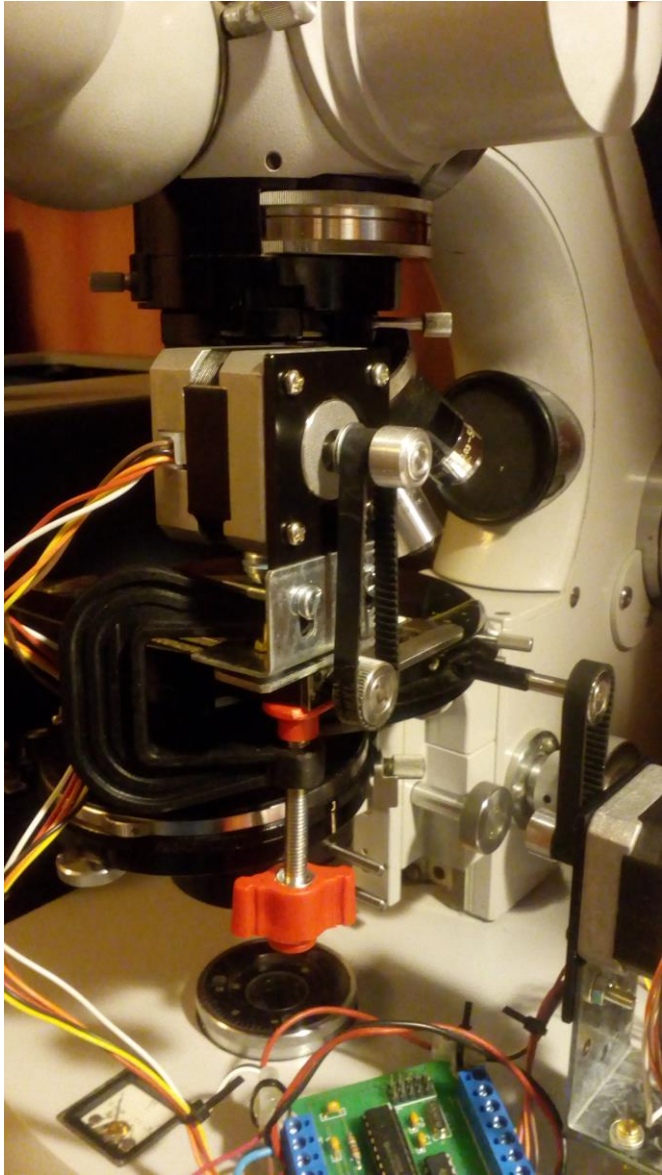
## Stepper Pack

Complete Starter Pack for Stepper Motor Control Direct from your PC  
*Home automation and robotic control made easy*











### Motorised stage control

**Initialise**

Initialise must be pressed before any of the other buttons below

**Run Series**

Number of Columns

Number of Rows

**Motor 1**

Number of Steps to Take

Time Interval Between Steps (ms)

Reverse

Output 1

Output 2

Output 3

**Run test**

**Stop**

**Set Step Mode**

Motor 1  **Set Mode**

Motor 2

**Motor 2**

Number of Steps to Take

Time Interval Between Steps (ms)

Reverse

Output 1

Output 2

Output 3

**Run test**

**Stop**

**Status**

**Motor 1 Status**

Active  Steps Left

**Motor 2 Status**

Active  Steps Left

**Input Status**

	1	2	3	4	5
Inputs	<input type="checkbox"/>	<input type="checkbox"/>	<input type="checkbox"/>	<input type="checkbox"/>	<input type="checkbox"/>

**Get Motor Status**

**Set Step Mode**

**Finished**

FLAT PRO

The screenshot shows a Windows desktop environment. The primary application is 'AutoStep Stepper Motor Controller'. The interface is divided into several sections:

- Manual Control:** Contains settings for Motor 1 (Steps: 77, Interval: 50) and Motor 2 (Steps: 11, Interval: 100). It includes checkboxes for Reverse and Outputs (1, 2, 3) and Run/Stop buttons.
- Automatic Control:** Features a dropdown for Motor selection, buttons for Save, Restore, Clear, Add, Insert, Delete, and Replace, and an Auto checkbox. Below is a table for task configuration:

Task	Steps	Interval	Rev	Outputs
1	0	0	<input type="checkbox"/>	<input type="checkbox"/>

- Status:** Includes 'Get Status' and indicators for Motor 1 Active (M1 Left: 0), Motor 2 Active (M2 Left: 0), and Inputs (1, 2, 3, 4, 5).
- Step Mode Configuration:** Shows Motor 1 set to 'Full Step' and Motor 2 set to 'Full Step', with a 'Get Step Mode' button.

A secondary window titled 'Run AutoStep' is open in the bottom left, showing a 'Ready' status. The Windows taskbar at the bottom indicates the time is 10:44 on 14/06/2019.

The tablet displays a software interface for image analysis. The main window shows a microscopic image of plant tissue with a grid overlay. A sidebar on the right contains various analysis parameters and a graph.

- Image Analysis Parameters:**

Parameter	Value
Width/Height	1000/1000
Area	1000000
Perimeter	2000
Centroid	500, 500
Depth of field (mm)	0.1

- Graph:** A line graph showing a curve that rises and then plateaus.

The Windows taskbar at the bottom shows the time as 10:44 on 14/06/2019.



BACK

1 IMPORT

2 STITCH

3 CROP

4 EXPORT

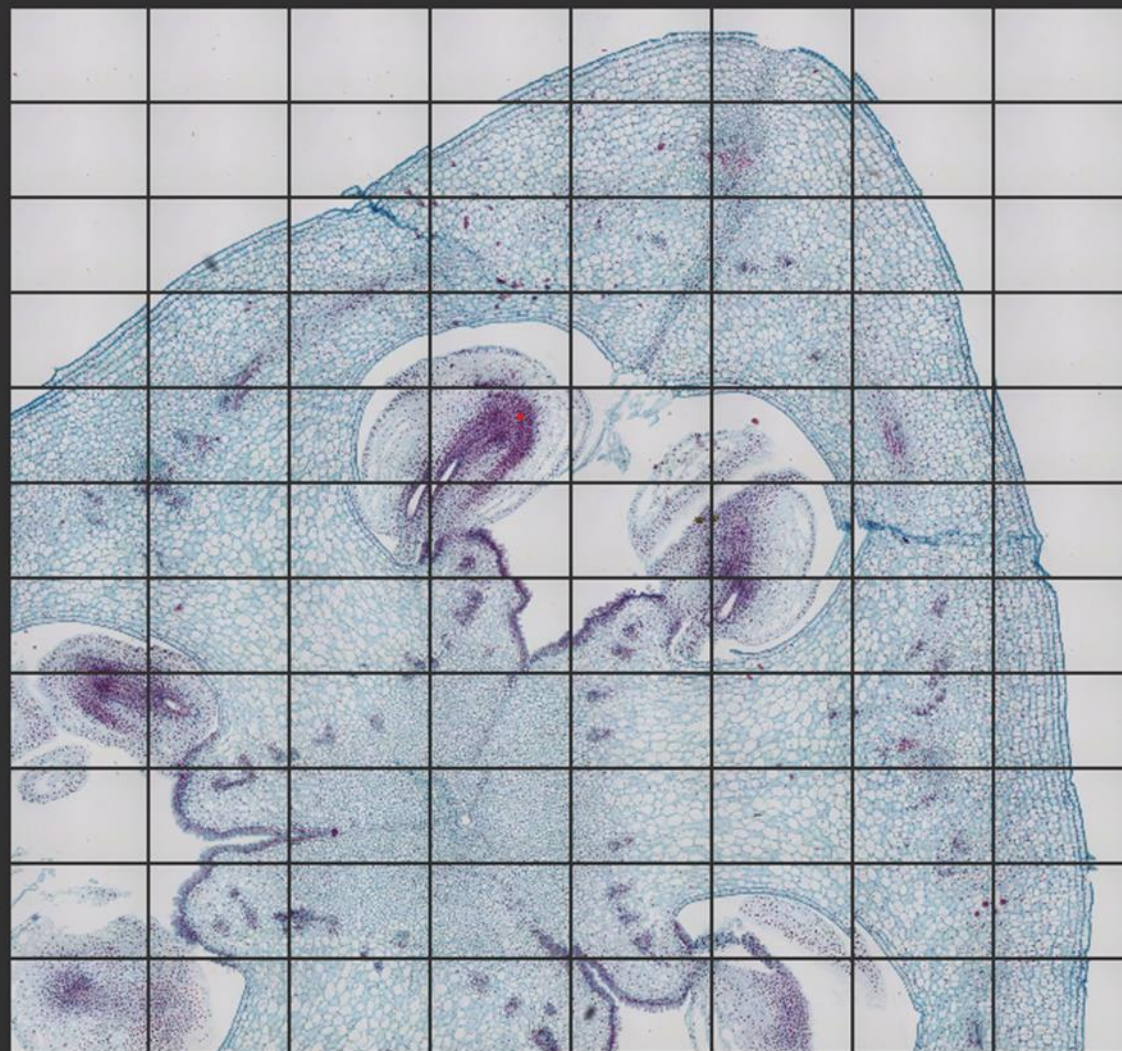
NEXT

Add images...

Remove selected

Sort by File name

Drag & drop photos here



> Simple panorama

> Structured panorama

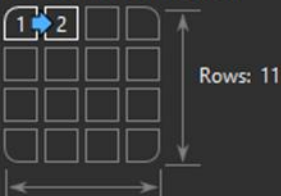
Camera motion

Planar motion

Layout

Auto layout 88 images

Initial corner and direction



Columns: 8

Image order

- Serpentine
- Zigzag

Angular range

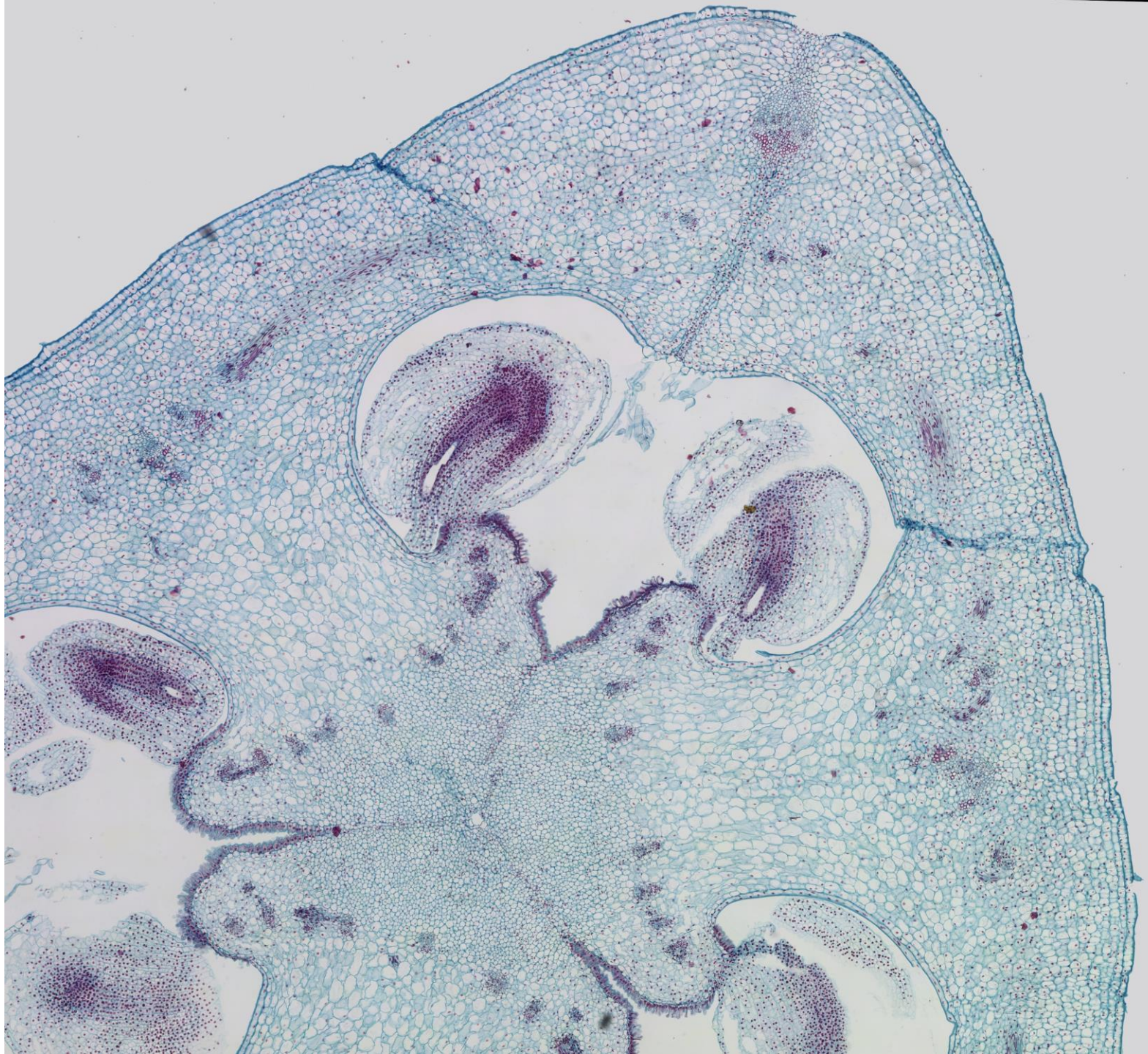
- Less than 360°
- 360° horizontally
- 360° vertically

Overlap

Auto overlap

- Horizontal 10 %
- Vertical 10 %
- 360° seam 10 %
- Search radius 10 %

Preview overlap



The End